

▼  
AREA  
7  
▲  
▲  
▲  
▲  
▲



## Ditec **SECTOR PLUS**

The maximum  
visibility door  
for increased  
safety

The Ditec Sector Plus is a compact door suitable for narrow spaces, with optional full transparency. The self-testing bottom edge and semi-automatic opening feature assure safety.

## IMPROVED WORKING CONDITIONS

### Optimized process flow

The counterweight allows the door to open and close fast. With the INVERTERmotion, speed can be differentiated and increased up to 1.5 m/s.

### Energy savings

The high operating speed avoids the doors remaining open longer than needed. Thus, the working environment remains stable and energy can be saved.

### Wind resistance

Aluminum or steel bars reinforce the curtain against wind loads.

## SAFETY ASSURED

### Protection of people & goods

The self-testing, sensible bottom edge and the photocells detect possible obstacles and reopen the door when needed.

### Emergency opening

In case of emergency, a red handle can be turned to release the counterweight and open the door.

## SMART & NICE DESIGN

### Italian looks

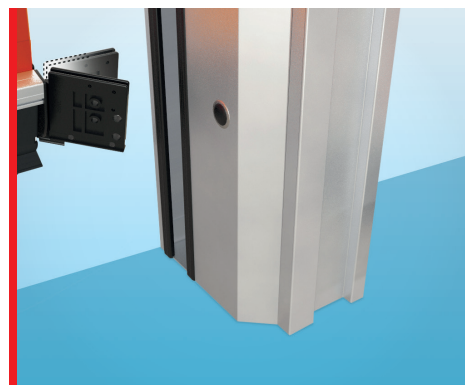
Sector Plus doors offer the possibility of a modular curtain, which allows for full transparency. Reinforcement bars ensure that the curtain is nicely stretched. The compact columns provide an elegant appearance.

### Low maintenance

Counterweights reduce the efforts required by the motor, resulting in a longer lifetime and less maintenance costs. The Ditec original ACS break-away system avoids further damage to the aluminum bottom bar and steel columns in case of crash. It features so-called safety shoes that can easily be replaced by a non-specialised engineer. With a modular curtain, damaged sections can easily be substituted, without changing the entire curtain.

### Space saving

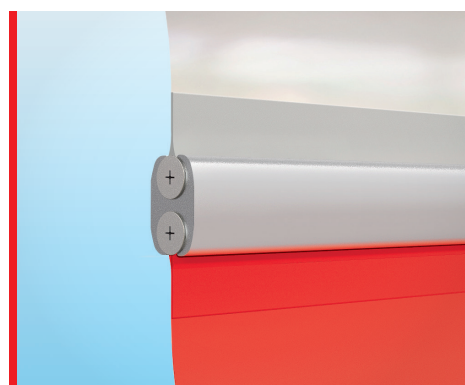
The Ditec Sector Plus is a compact door, with built-in counterweights and motor. The self-supporting frame and the absence of a side-motor allows for installation in a corridor or any other limited space.



Anti-Crash system



Emergency opening



Modular sections

Your Ditec dealer:

### Dynaco Europe NV

Waverstraat 21  
B-9310 Moorsel-Aalst  
(Belgium)

T. +32 53 72 98 98

F. +32 53 72 98 50

M. Info.ditec.eu@ditecautomations.com

[www.ditecdoor.com](http://www.ditecdoor.com)

Ditec is a world leading brand, offering high speed doors, traffic control automation and pedestrian door solutions since 1974. Marketing our products exclusively through professional distributors and installers, we promise our partners continuous product innovation, on-time logistics and full technical and commercial support. Ditec is part of the ASSA ABLÖY Group, the world leader in access solutions. Every day, we help billions of people experience a more open world.