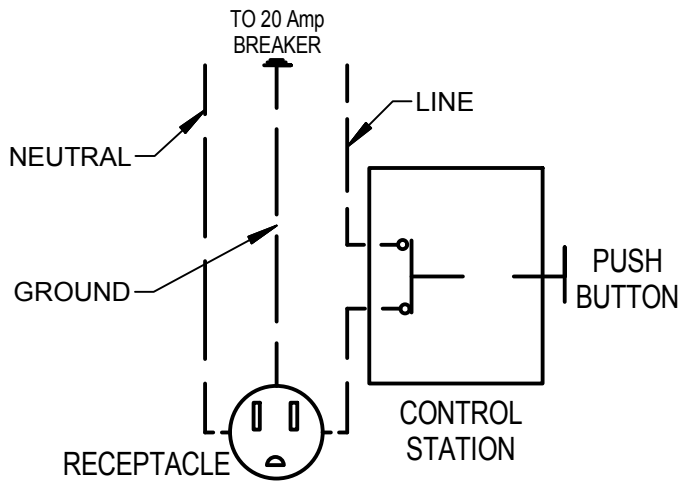


STAB-A-LOAD

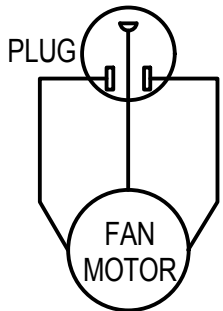
DOCK LOADING SOLUTIONS BUILT TO LAST...

AIR-POWERED DOCK LEVELLER STANDARD PIT DETAIL

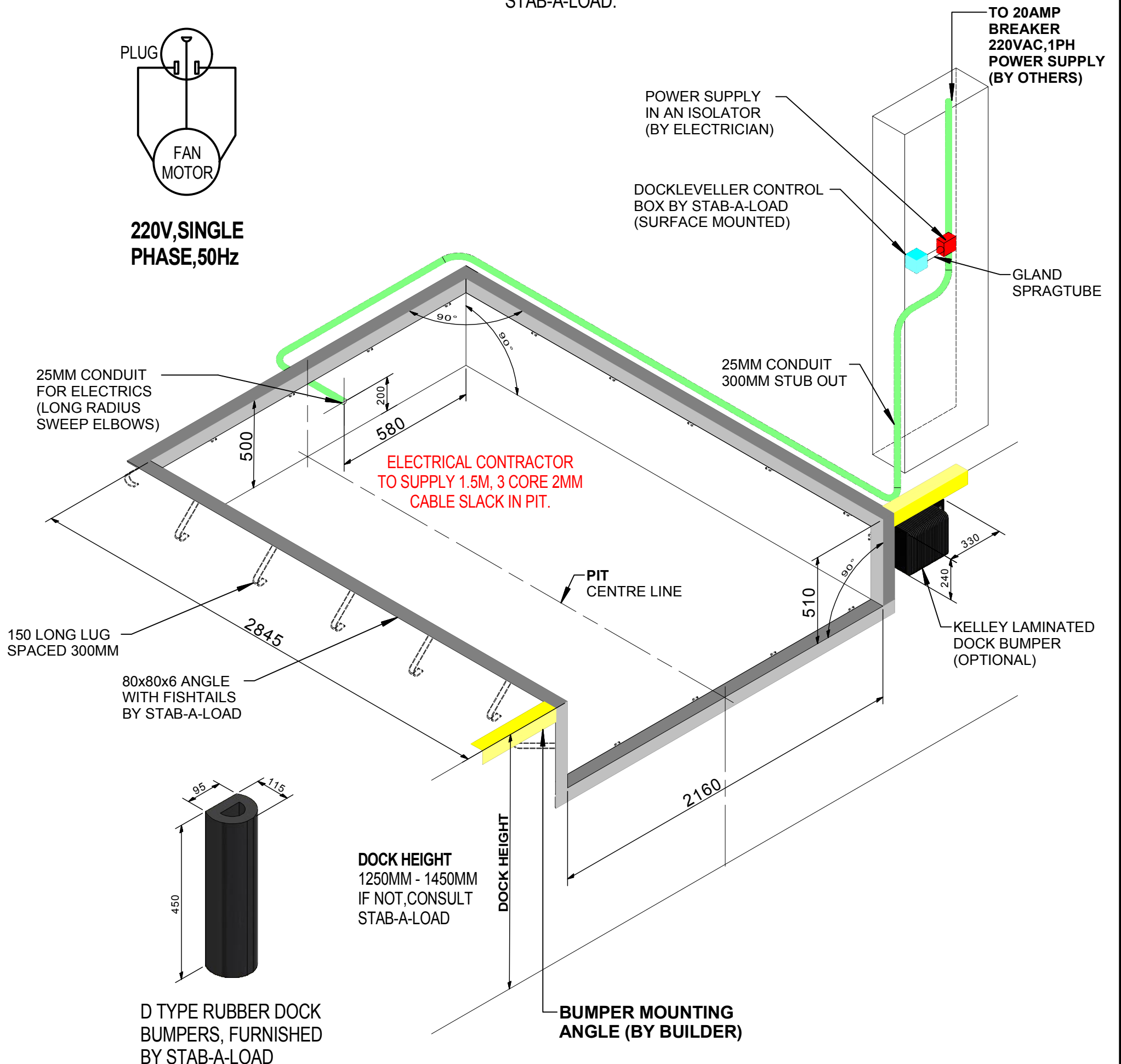


SPECIAL NOTES

- REINFORCE ALL CURB ANGLES.
- PIT SQUARENESS TO A MAXIMUM OF 6MM TOLERANCE.
- FRONT OF PIT 10MM-20MM GREATER TO ALLOW FOR DRAINING.
- FOR INCLINED OR DECLINED APPROACHES TO DOCKLEVELLER, CONSULT STAB-A-LOAD.



220V, SINGLE PHASE, 50Hz



D TYPE RUBBER DOCK BUMPERS, FURNISHED BY STAB-A-LOAD

MODEL: AFX/LX 710