

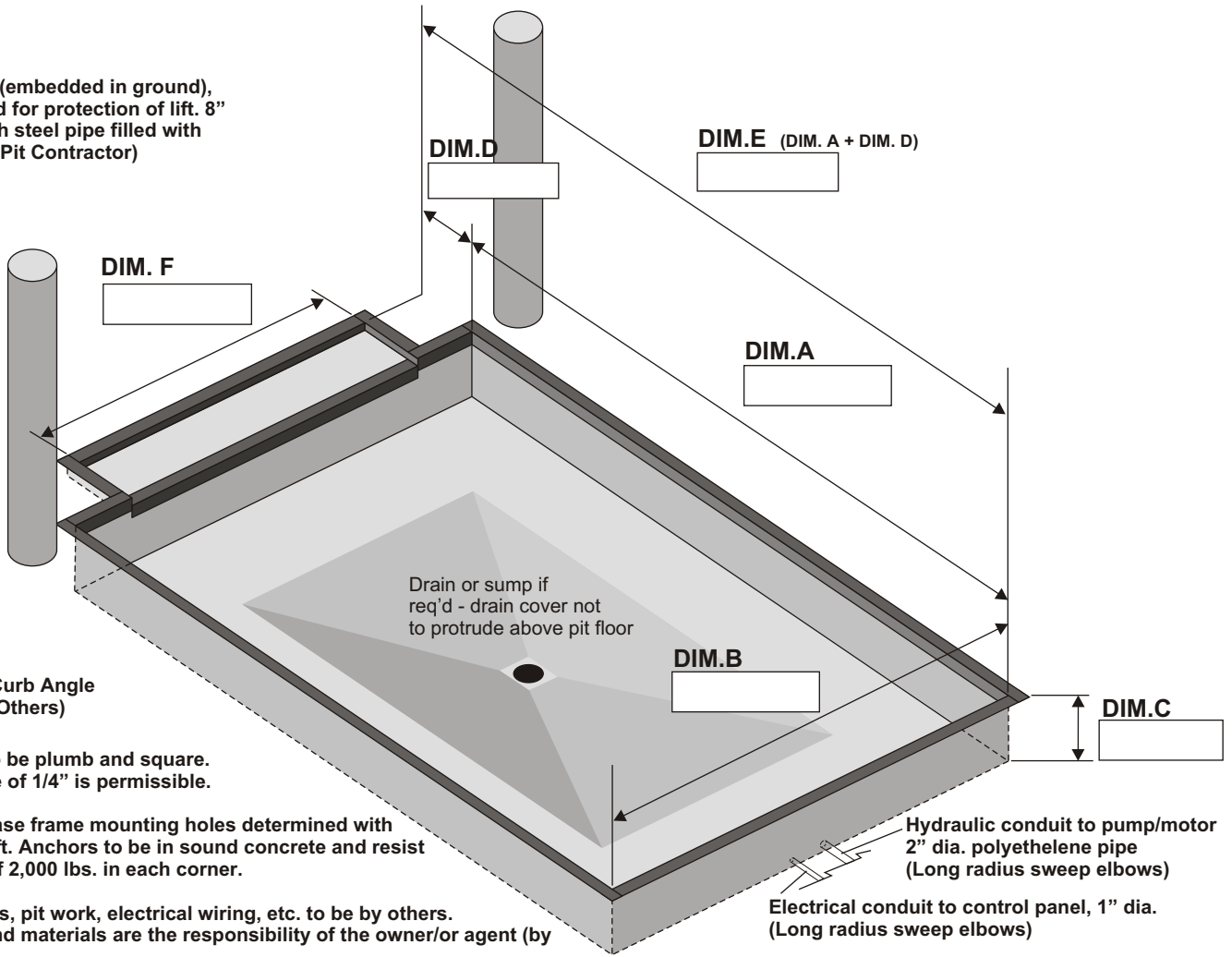


FIRST. AND BUILT TO LAST.



SCISSORS LIFT PIT DETAIL 4 SIDED PIT (RECESSED BRIDGE)

Bumper post (embedded in ground), recommended for protection of lift. 8" dia. X 48" high steel pipe filled with concrete. (by Pit Contractor)



3"x 3"x 1/4" Curb Angle (Supplied by Others)

All pit walls to be plumb and square. Reverse slope of 1/4" is permissible.

Location of base frame mounting holes determined with selection of lift. Anchors to be in sound concrete and resist upward pull of 2,000 lbs. in each corner.

All curb angles, pit work, electrical wiring, etc. to be by others. All pit work and materials are the responsibility of the owner/or agent (by contractor)

Reinforce concrete to meet local soil conditions and ensure that all pit work complies with local codes.

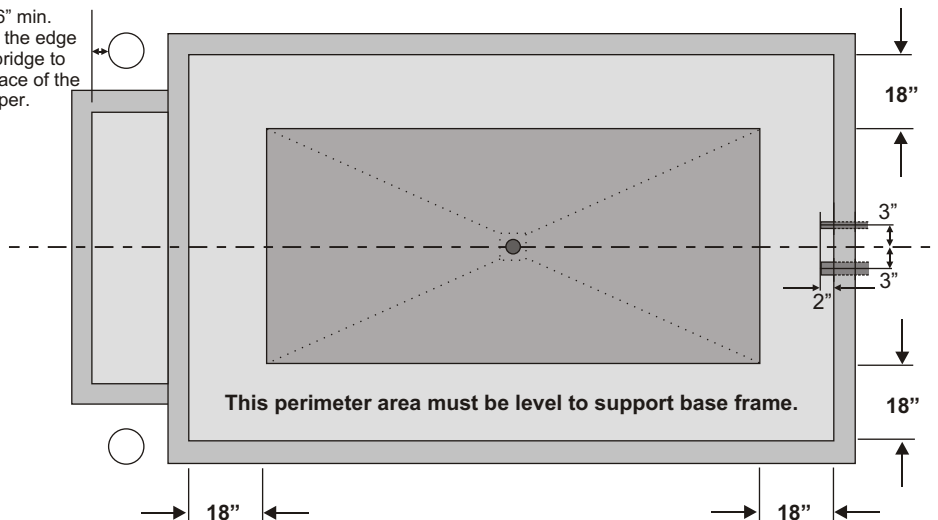
Bridge Recess: 1" deep, for bridges up to 24" long. For bridges 24"- 42" recess will be 2" deep.



ALL CURB ANGLE JOINTS TO BE WELDED SECURELY.

IMPORTANT - Concrete behind Pit Steel must be well vibrated. 8" recommended minimum thickness for Pit Walls and Pit Floor

4" - 6" min. from the edge the bridge to the face of the bumper.



NOTICE

Pit Dimensional Tolerances are +/- 1/8" on squareness, Depth, Width and Length.
 KELLEY Assumes No Liability for Deviations beyond this Tolerance.

| MODEL | PIT DIMENSIONS | | | | | | | | | |
|----------|-----------------------|------------------------|----------|----------------------|-----------------------|-----------------|----------------------|-----------------------|----------|------------------------|
| | Dim. "A" No Bridge | Dim. "A" 18" Bridge | Dim. "B" | Dim. "C" 4K to 6K | Dim. "C" 8K to 15K | Dim. "C" 20K | Dim. "D" 4K to 6K | Dim. "D" 8K to 20K | Dim. "E" | Dim. "F" 72" Bridge |
| 48 x 96 | 98" | "E"- "D" | 50" | 12 1/4" | 14 1/4" | 18 1/4" | 16" | 15" | 116" | 50" |
| 60 x 96 | 98" | "E"- "D" | 62" | 12 1/4" | 14 1/4" | 18 1/4" | 16" | 15" | 116" | 62" |
| 72 x 96 | 98" | "E"- "D" | 74" | 12 1/4" | 14 1/4" | 18 1/4" | 16" | 15" | 116" | 74" |
| 72 x 108 | 110" | "E"- "D" | 74" | 12 1/4" | 14 1/4" | 18 1/4" | 16" | 15" | 128" | 74" |
| 72 x 120 | 122" | "E"- "D" | 74" | 12 1/4" | 14 1/4" | 18 1/4" | 16" | 15" | 140" | 74" |
| 72 x 144 | 146" | "E"- "D" | 74" | 12 1/4" | 14 1/4" | 18 1/4" | 16" | 15" | 164" | 74" |
| 84 x 96 | 98" | "E"- "D" | 86" | 12 1/4" | 14 1/4" | 18 1/4" | 16" | 15" | 116" | 74" |
| 84 x 108 | 110" | "E"- "D" | 86" | 12 1/4" | 14 1/4" | 18 1/4" | 16" | 15" | 128" | 74" |
| 84 x 120 | 122" | "E"- "D" | 86" | 12 1/4" | 14 1/4" | 18 1/4" | 16" | 15" | 140" | 74" |
| 84 x 144 | 146" | "E"- "D" | 86" | 12 1/4" | 14 1/4" | 18 1/4" | 16" | 15" | 164" | 74" |
| 96 x 96 | 98" | "E"- "D" | 98" | 12 1/4" | 14 1/4" | 18 1/4" | 16" | 15" | 116" | 74" |
| 96 x 108 | 110" | "E"- "D" | 98" | 12 1/4" | 14 1/4" | 18 1/4" | 16" | 15" | 128" | 74" |
| 96 x 120 | 122" | "E"- "D" | 98" | 12 1/4" | 14 1/4" | 18 1/4" | 16" | 15" | 140" | 74" |
| 96 x 144 | 146" | "E"- "D" | 98" | 12 1/4" | 14 1/4" | 18 1/4" | 16" | 15" | 164" | 74" |

| SPECIAL | Dim "A" | Dim "B" | Dim "C" | Dim "D" | Dim "E" | Dim "F" |
|---------|---------|---------|---------|---------|---------|---------|
| | | | | | | |

***NOTE - Curb Angle Supplied by Others.**

PROJECT INFORMATION

Job Name _____

Address _____

General Contractor _____

Kelley Distributor _____

Scissors Lift Model _____ Voltage _____

Quantity _____

CONSTRUCTION APPROVAL

Company _____

Address _____

By _____

Date _____

