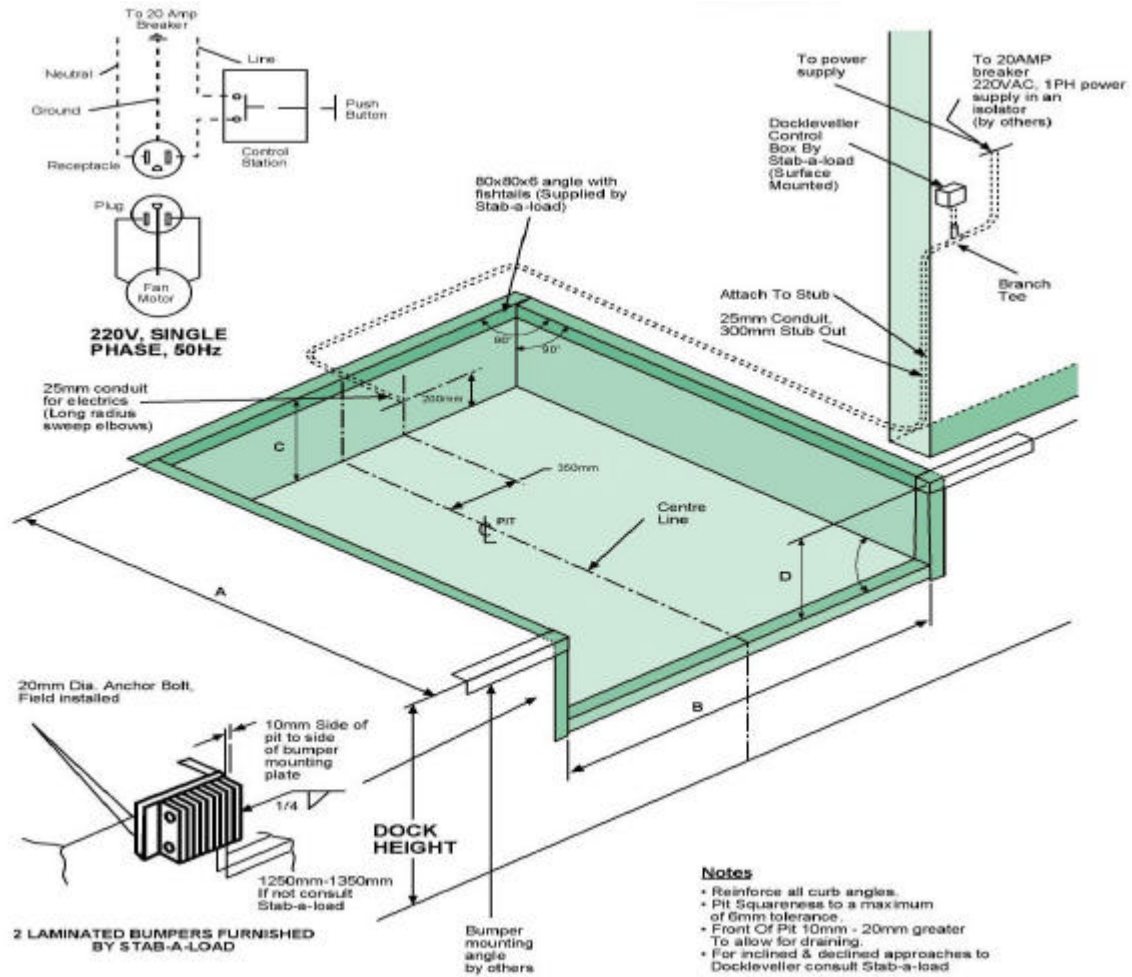




# STAB-A-LOAD<sup>cc</sup>

CK199505080/23

## STAB-A-LOAD STD DOCK LEVELLER PIT DIMENSIONS



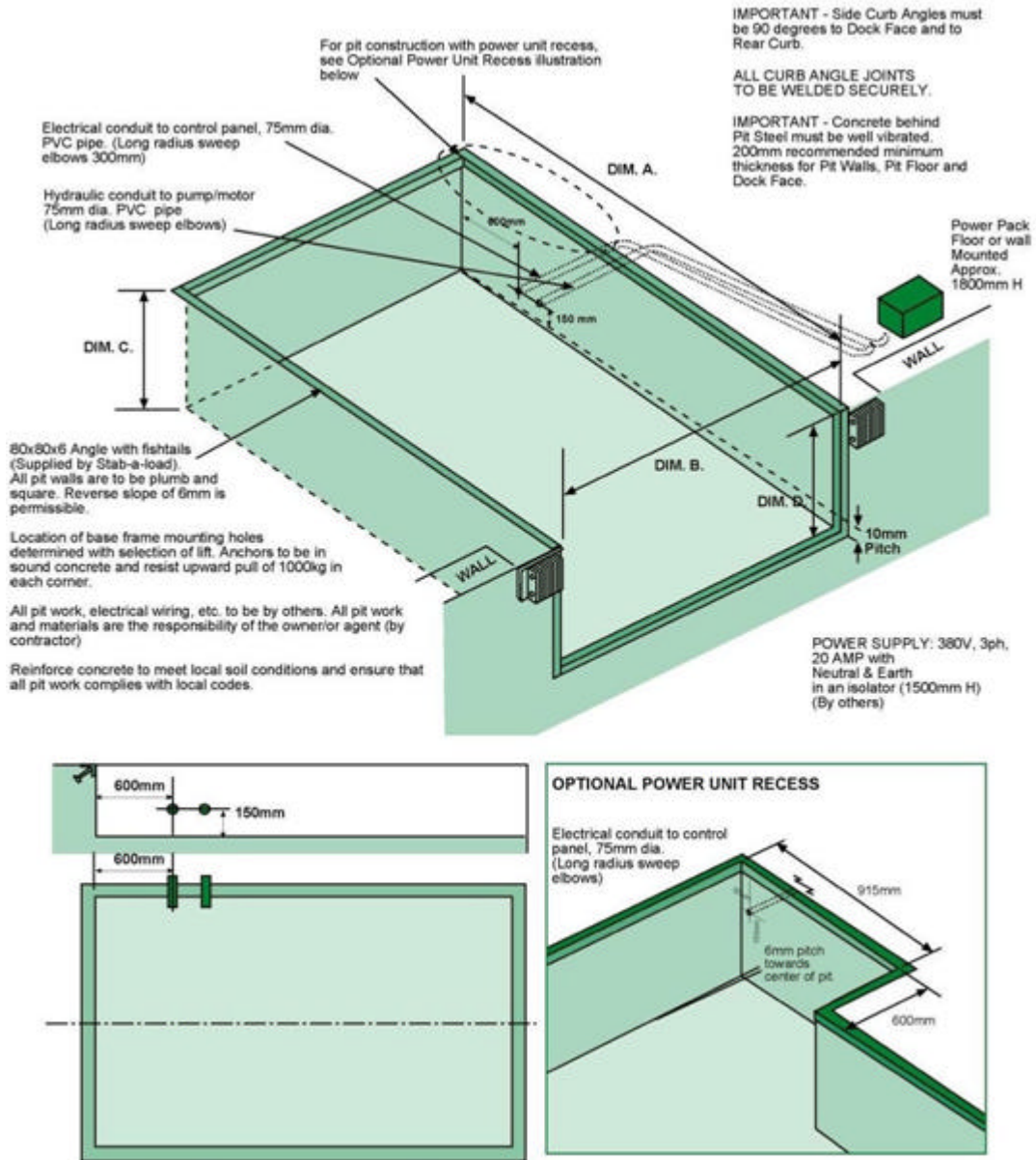
MODEL	LENGTH A	LENGTH B	LENGTH C	LENGTH D
610	2845	1860	500	510
710	2845	2160	500	510
612	3420	1860	500	510
712	3420	2160	500	510



# STAB-A-LOAD<sup>cc</sup>

CK19/5/05/00/23

## STANDARD DOCK MOUNTED SCISSORS LIFT PIT DIMENSIONS

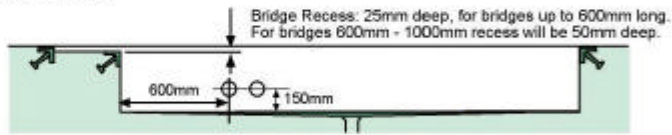
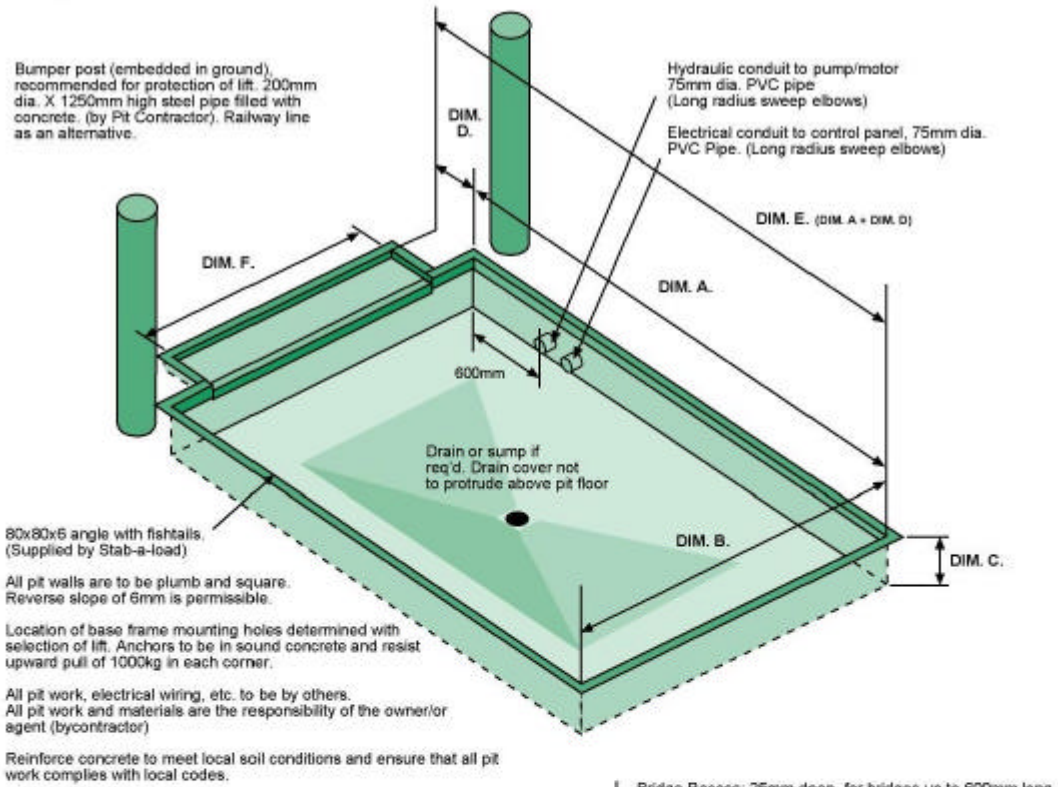


PLEASE CONTACT STAB-A-LOAD FOR PIT DIMENSIONS TO SUIT APPLICATION. CUTOMERS REQUIREMENTS IMPACT THE SPECIFIED DIMENSIONS.



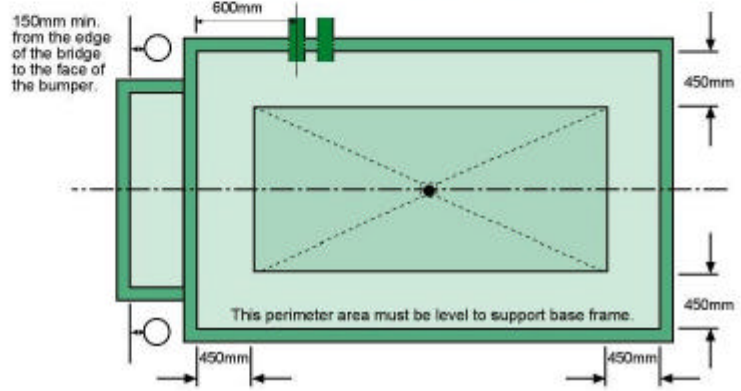
**STAB-A-LOAD<sub>cc</sub>**  
CK1995/05088/23

**STANDARD FLOOR MOUNT SCISSORS LIFT PIT DIMENSIONS**



**ALL CURB ANGLE JOINTS TO BE WELDED SECURELY.**

**IMPORTANT** - Concrete behind Pit Steel must be well vibrated. 200mm recommended minimum thickness for Pit Walls and Pit Floor.



**PLEASE CONTACT STAB-A-LOAD FOR PIT DIMENSIONS TO SUIT APPLICATION. CUTOMERS REQUIREMENTS IMPACT THE SPECIFIED DIMENSIONS.**